

N.E. 1/4  
SECTION 34, T.7N., R.2W., S.L.B.&M.

IN WEBER COUNTY, PLAIN CITY AND FARR WEST CITY

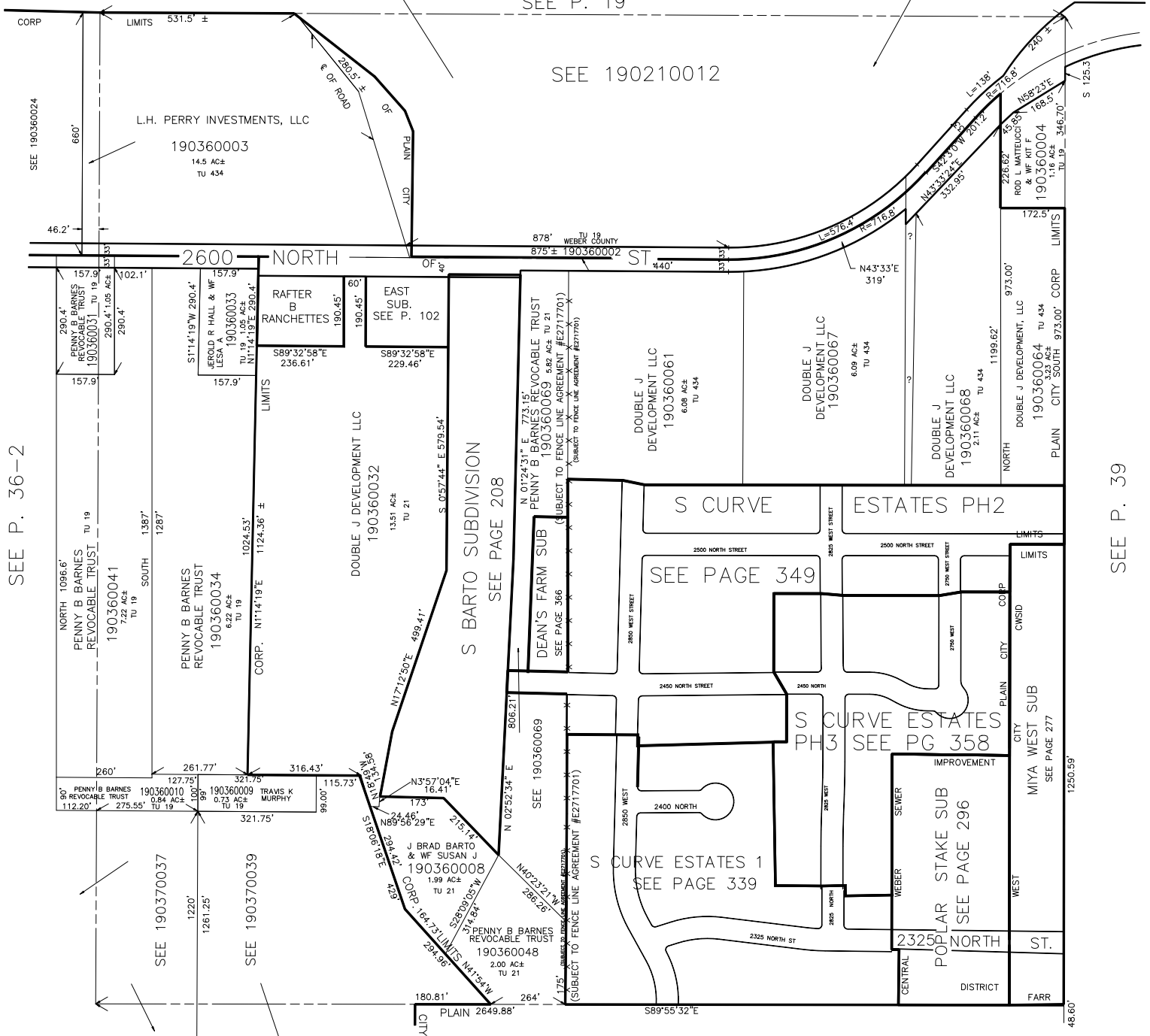
PREFIX: 19-036  
ALSO SEE P.36-2

TAXING UNIT: 19,21,308,434,470

SCALE 1" = 200'

SEE P. 19

SEE 190210012



SEE P. 36-2

SEE P. 39

SEE P. 37